


Third Function Valve Kit

#380-168A & #380-335A Installation Instructions




For B3350 & B2650 Kubota Tractors with LA534 & LA534A Loaders **Manual No. 380-169M**

Before You Start

 When you see this symbol, the subsequent instructions and warnings are serious - follow without exception. Your life and the lives of others depend on it!

California Proposition 65

 **WARNING:** Cancer and reproductive harm.
www.P65Warnings.ca.gov

IMPORTANT: Before you begin, thoroughly read these instructions and check to be sure all parts are accounted for. Please retain these installation instructions for future reference and parts ordering information.

General Information

Your Third Function Valve Kit has been designed specifically for the Kubota B3350 and B2650 tractor series equipped with a Kubota LA534 and LA534A front loader. These assembly instructions apply to the Third Function Valve Kit Accessories listed below:

- **380-168A: 3FVK PC B3350** page 2
- **380-335A: 3FVK FF B3350** page 2

Further Assistance

Your Land Pride dealer wants you to be satisfied with your new Third Function Valve Kit. If for any reason you do not understand any part of this manual or are not satisfied with the service received, the following actions are suggested:

1. Discuss any problems you have with your Third Function Valve Kit with your dealership service personnel so they can address the problem.
2. If you are still not satisfied, seek out the owner or general manager of the dealership, explain the question/problem, and request assistance.
3. For further assistance write to:

Land Pride Service Department
1525 East North Street

P.O. Box 5060
Salina, Ks. 67402-5060

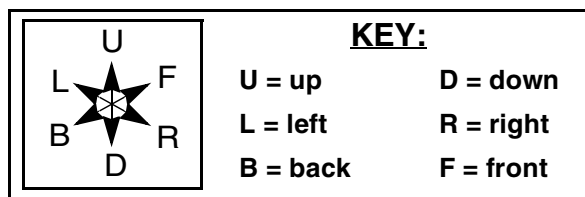
E-mail address
lp servicedept@landpride.com

Assembly Instructions

A detailed listing of parts for your cab tractor's 3rd Function Valve Kit is provided on page 8 for kits using pioneer couplers, and page 10 for kits using flat faced couplers. Use the list that is for your specific Third Function Valve Kit as a checklist to inventory parts received. Please contact your local Land Pride dealer for any missing hardware.

Direction Reference

All directional references are made from the operator seat while facing the direction the machine will operate.



Directional Arrows Used in Illustrations

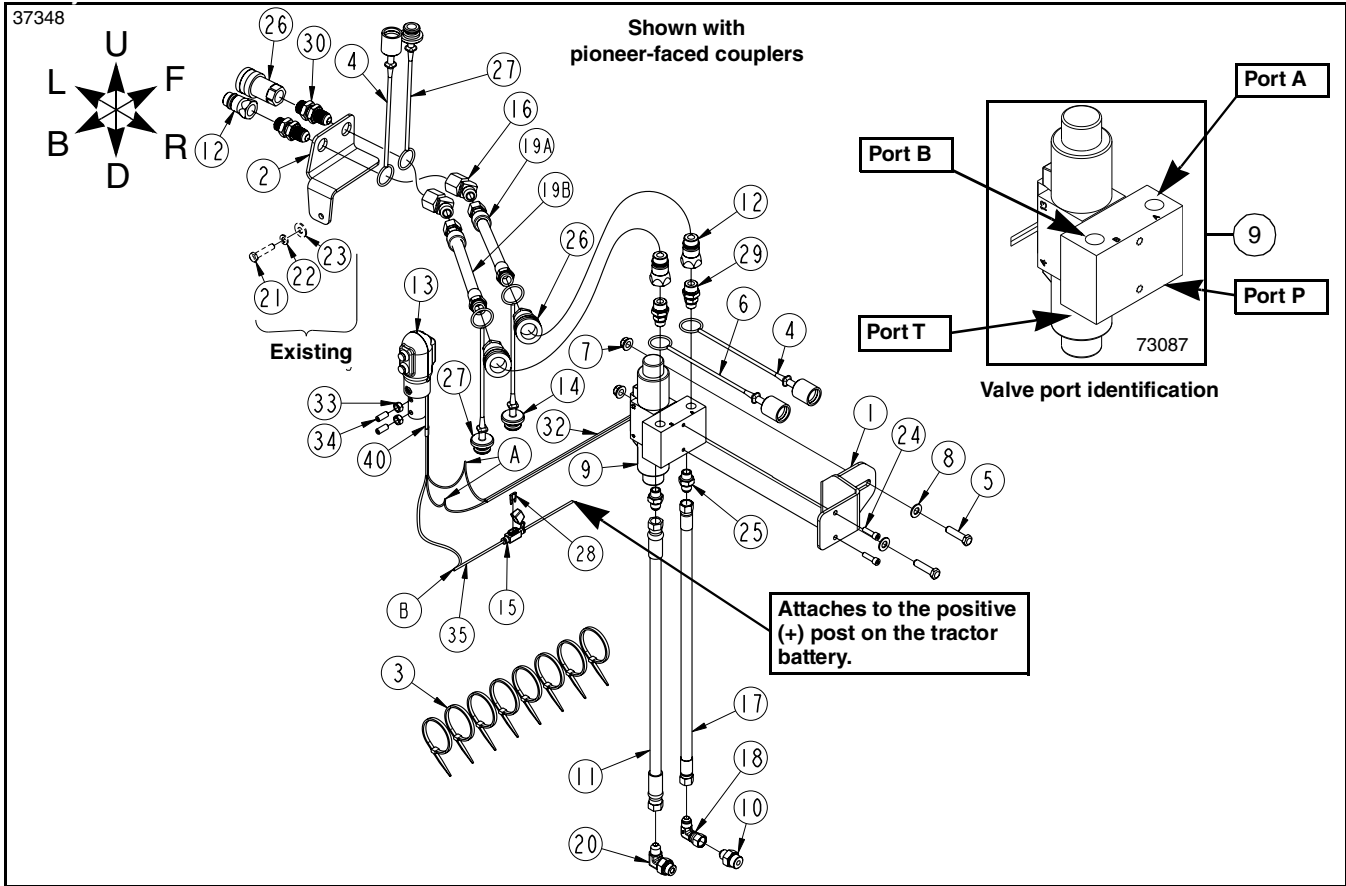
Initial Preparations

WARNING

To avoid serious injury or death: Hydraulic fluid under high pressure can penetrate the skin and/or eyes causing a serious injury. Wear protective gloves and safety glasses or goggles when working with hydraulic systems.

The steps listed below must be followed before installing this kit:

1. Reduce engine speed. Park tractor and attachment on solid, level ground.
2. Unhook the attachment from the loader arms, back away from attachment several feet, and lower loader arms until they are fully down.
3. Put tractor in park or set park brake, turn off engine, and remove ignition key to prevent unauthorized starting.
4. Relieve all hydraulic pressure to auxiliary hydraulic lines.
5. Wait for all components to come to a complete stop before leaving the operator's seat.
6. Use steps, grab-handles and anti-slip surfaces when stepping on and off the tractor.
7. As a safety precaution, disconnect the negative battery cable from battery terminal. Move cable away from terminal to avoid accidental contact.

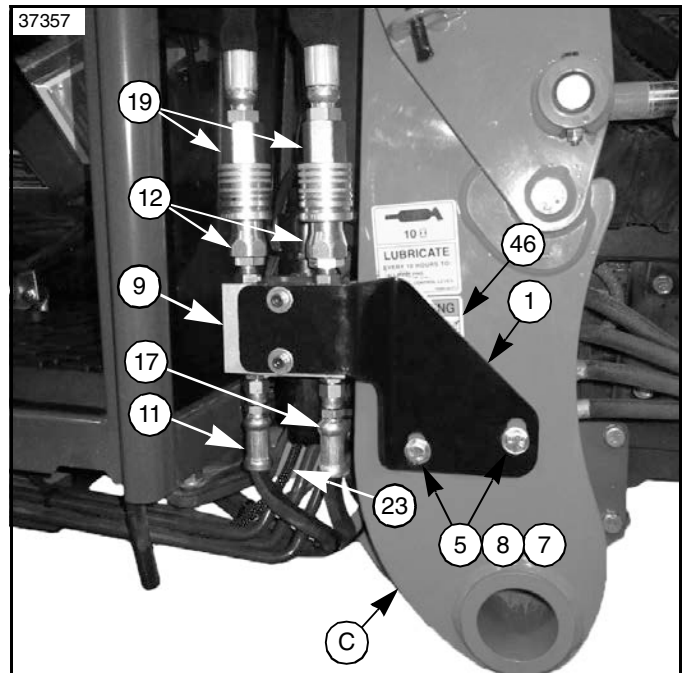


B3300/LA504 Third Function Valve Kit for Kubota Cab Tractor
Figure 1

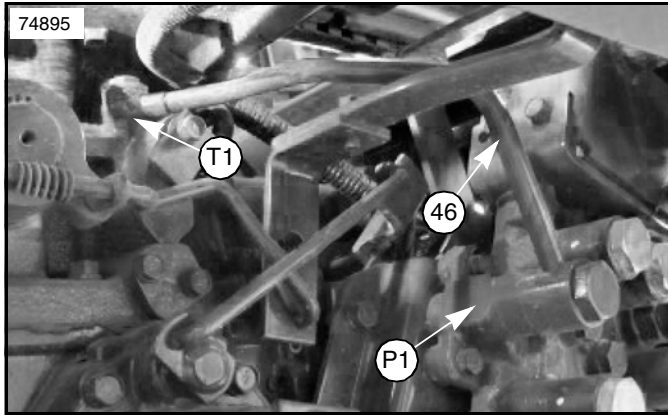
Valve Mount & Valve Assembly

Refer to Figure 1 & Figure 2:

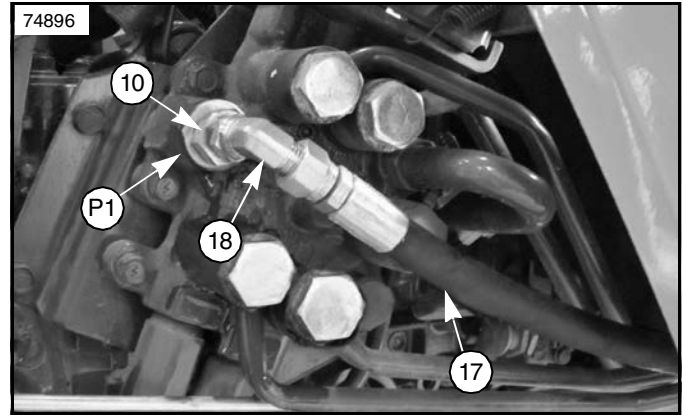
1. Attach valve mount bracket (#1) to existing holes in right-hand loader support plate "C" with 3/8"-16 x 1 1/2" GR5 hex bolts (#5), flat washers (#8), and hex flange lock nuts (#7).
2. Attach the valve (#9) to the valve mount bracket (#1) using 1/4" x 7/8" bolts (#24).
3. Replace any safety alert decal(s) (#46) covered by support bracket (#1). See your nearest Kubota dealer to purchase new safety alert decal(s).
4. Attach 62" long hose (#11) to "T" port in valve (#9) using adapter (#25).
5. Attach 48" long hose (#17) to "P" port in valve (#9) using adapter (#25).
6. Install adapter (#29) and black dust cap (#4) to "A" port on valve (#9). Attach quick coupler (#12) to adapter (#29).
7. Install adapter (#29) and green dust cap (#6) to "B" port on valve (#9). Attach quick coupler (#12) to adapter (#29).
8. Route hydraulic hoses (#11 & #17) under the tractor platform and back toward the loader valve.



Valve Location
Figure 2



Steel Tube Location
Figure 3



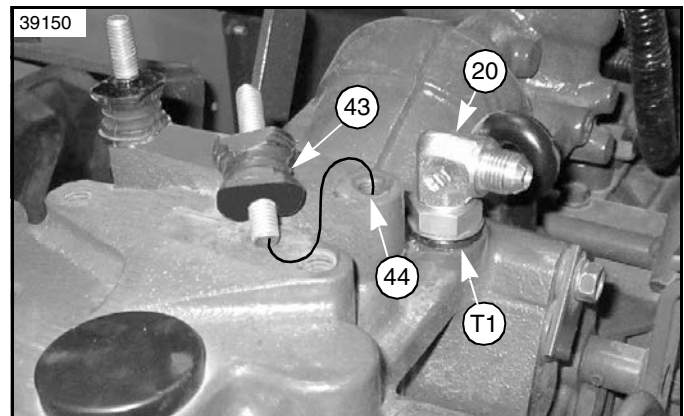
Connect 48" Long Hose
Figure 4

Connect to Power Beyond Ports

Refer to Figure 1 on page 2, & Figure 3, Figure 4, & Figure 5:

IMPORTANT: Land Pride recommends that your dealer connect hydraulic hoses (#11 & #17) to your tractor's power beyond port and (P1) and return to tank port (T1). Improper hook-up could cause damage to your tractor.

IMPORTANT: DO NOT connect hydraulic hoses (#11 & #17) to the loader valve and power beyond port if the outer block feeds equipment mounted on the back of the tractor such as a backhoe. The instructions below do not apply in this situation. Have your nearest dealer hook-up these hoses. Improper hook-up can damage your tractor.



Tank Port (B3350 tractor Shown)
Figure 5

1. Place chocks in front and back of the tractor's front wheels.
2. Loosen lug nuts on the right rear wheel. Do not remove lug nuts at this time.
3. Jack right rear wheel off the ground and place a jack stand under the right rear axle.
4. Lower right rear axle onto the jack stand. The wheel should still be slightly off the ground. Make sure jack stand is secure and will not slip out from under the tractor axle.
5. Remove lug nuts and right rear wheel.

Refer to Figure 3:

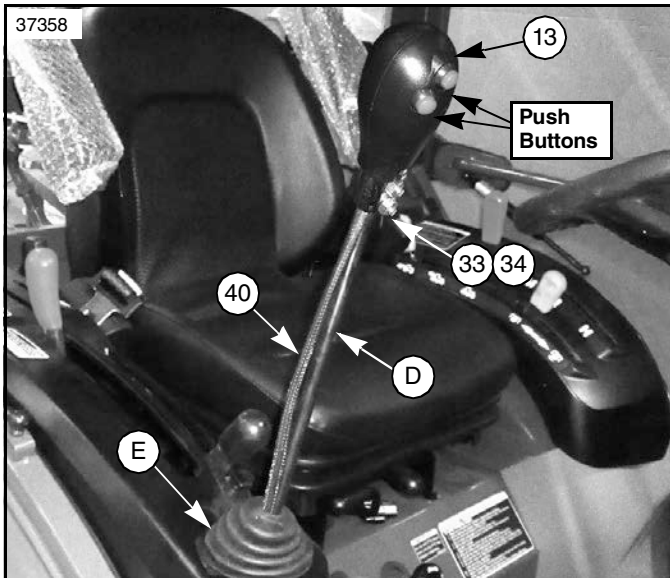
6. Locate and remove steel tube (#46) that is connected to the power beyond port (P1) and return to tank port (T1).

Refer to Figure 1 on page 2, & Figure 4:

7. Install the larger hydraulic adapter (#10) into the power beyond port on the loader valve and 9/16" MJIC x 9-16" FJIC elbow (#18) to adapter (#10).
8. Connect hydraulic hose (#17) from "P" port to elbow (#18). Tighten hose to the elbow.

Refer to Figure 2 on page 2, & Figure 5:

9. Remove back right seat support stud (#43).
10. Install 3/8" MBSPP x 9/16" MJIC elbow (#20) to return to tank port (T1) on the tractor where the steel tube connecting power beyond ports was.
11. Position elbow (#20) as shown and tighten.
12. Reattach seat support stud (#43) to mount (#44) and tighten.
13. Connect hydraulic hose (#11) from "T" port to elbow (#20).
14. Secure hoses (#11 & #17) to underside of tractor with cable ties (#3)
15. Replace right rear wheel and screw lug nuts on until snug.
16. Jack axle up and remove jack stand.
17. Lower tractor down and tighten lug nuts in a crisscross pattern. Refer to tractor Operator's Manual for proper torque value.
18. Remove chocks.
19. Check tractor hydraulic fluid level. If low, add recommended hydraulic fluid. Refer to your tractor Operator's Manual for recommended hydraulic fluid and procedure for checking hydraulic fluid level.

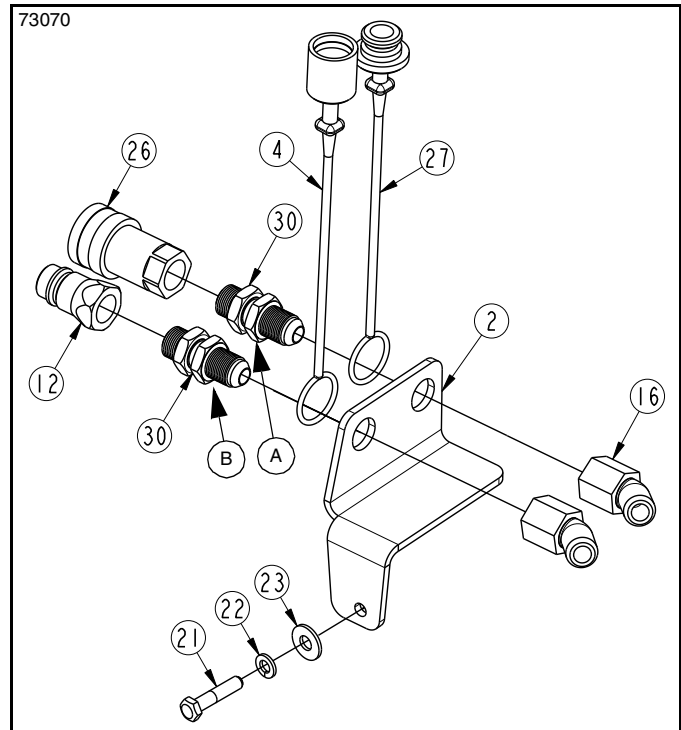


Control Lever Assembly
Figure 6

Control Lever Assembly

Refer to Figure 1 on page 2, & Figure 6:

1. Remove existing knob (not shown) from end of control lever "D".
2. Install new control handle (#13) over end of control lever "D" with push buttons facing operator.
3. Tighten set screws (#34) against control lever "D". Tighten jam nuts (#33) to secure set screws (#34).
4. Thread wiring harness (#40) through rubber cover "E" in Figure 6 and to wiring harness (#32) shown in Figure 1 on page 2.
5. **Reference Wire Connections "A":** Connect one black wire in harness (#40) to one black wire in harness (#32) and the other black wire in harness (#40) to one white wire in harness (#32).
6. **Reference Wire Connection "B":** Connect the two red wires in harness (#40) to one end of wire (#35) with fuse holder (#15), and the opposite end of wire (#35) to the positive (+) post on the battery.
7. Reconnect disconnected negative battery wire to the battery's negative (-) post.
8. Secure wiring (#32, #35, #40) with cable ties (#3) as needed.



Bulkhead Mount with Pioneer Couplers
Figure 7

Bulkhead Mount Assembly

Refer to Figure 7 & Figure 8 on page 5:

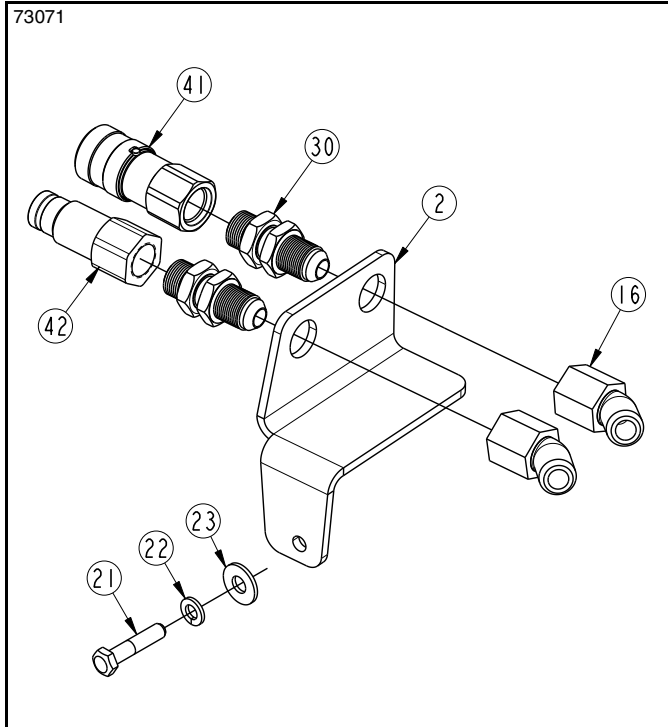
1. Attach bulkhead fittings (#30) to bulkhead mount (#2). Tighten bulkhead locknuts to bulkhead mount (#2).

Refer to Figure 7:

2. When installing the kit with pioneer couplers, slide green dust plug (#27) on bulkhead fitting (A), and black dust cap (#4) onto bulkhead fitting (B).

Refer to Figure 7, Figure 8, & Figure 9 on page 5:

3. Attach female coupler (#26 or #41) to bulkhead fitting (#30B). Tighten and secure couplers.
4. Attach male coupler (#12 or #42) to bulkhead fitting (#30A). Tighten to secure coupler to bulkhead fitting.
5. Attach elbows (#16) to the fittings (#30). Do not tighten elbows at this time.

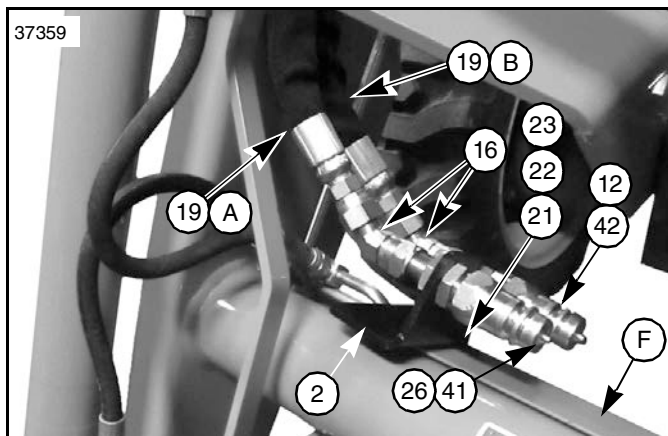


Bulkhead Mount with Flat Faced Couplers
Figure 8

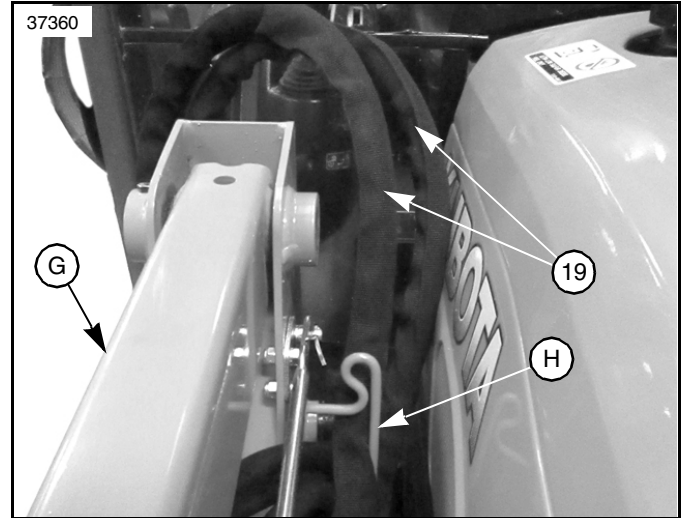
Cross Beam Mount Assembly

Refer to Figure 7 on page 4, Figure 8, & Figure 9:

1. Remove existing hardware (#21, #22, & #23) from the right-hand side of loader cross tube "F".
2. Orient as shown in Figure 9, attach bulkhead mount (#2) to the right-hand side of loader cross tube "F" with removed hardware (#21, #22, & #23).
3. Tighten replaced hardware (#21, #22, & #23) to the proper torque.
4. Attach 86" long hoses (#19) to elbows (#16).



Cross Beam Mount Assembly
(Shown with all male Pioneer Couplers)
Figure 9



Hydraulic Hose Routing
Figure 10

Hydraulic Hose Routing

Refer to Figure 1 on page 2, Figure 9, & Figure 10:

1. Route hoses (#19) along loader arm and through loader hose loop bracket "H" to the third function valve (#9).
2. Slide black dust plug (#14) on free end of hose (#19A) and attach female coupler (#26) to the hose.
3. Slide green dust plug (#27) on free end of hose (#19B) and attach female coupler (#26) to the hose.
4. Connect hose (#19A) to quick coupler (#12) in port "A," on valve block (#9).
5. Connect (#19B) hose to quick coupler (#12) in port "B," on valve block (#9).
6. Tighten elbows (#16) to adapters (#30).
7. Tighten hoses (#19) to elbows (#16).
8. Secure hydraulic hoses (#19) as needed with cable ties (#3).

Check Operating and Fluid Level

The Third Function Valve is now ready to be used with a multitude of attachments. Be sure to familiarize yourself with a complete understanding of how to operate the Third Function Valve Kit.

DANGER

To avoid serious injury or death:

Do not allow bystanders to be near the attachment, loader arms, or tractor during operation. They can become entangled, pinched, or crushed by the equipment. Disconnect and lockout power source before making adjustments or servicing tractor and attachment.

1. Hook attachment to the tractor front loader and couple hydraulic hoses to the bulkhead couplers at the front of the loader.
2. Raise attachment off the ground and operate the third function hydraulics using the push-buttons on the newly installed control handle.
 - The top red button switch will actuate the attachment in one direction.
 - The bottom red button switch will actuate the attachment in the opposite direction.
3. **Refer to Figure 1 on page 2:** Switch hoses (#19A & #19B) at couplers (#11) if the attachment's hydraulic cylinder(s) operate in the opposite direction intended.

IMPORTANT: Refer to your tractor Operator's Manual for recommended hydraulic fluid and procedure for checking hydraulic fluid level.

4. Once hoses and cylinder(s) are full of hydraulic fluid, check tractor hydraulic fluid level.
5. If low, add recommended hydraulic fluid.

Relieve Hydraulic System Pressure

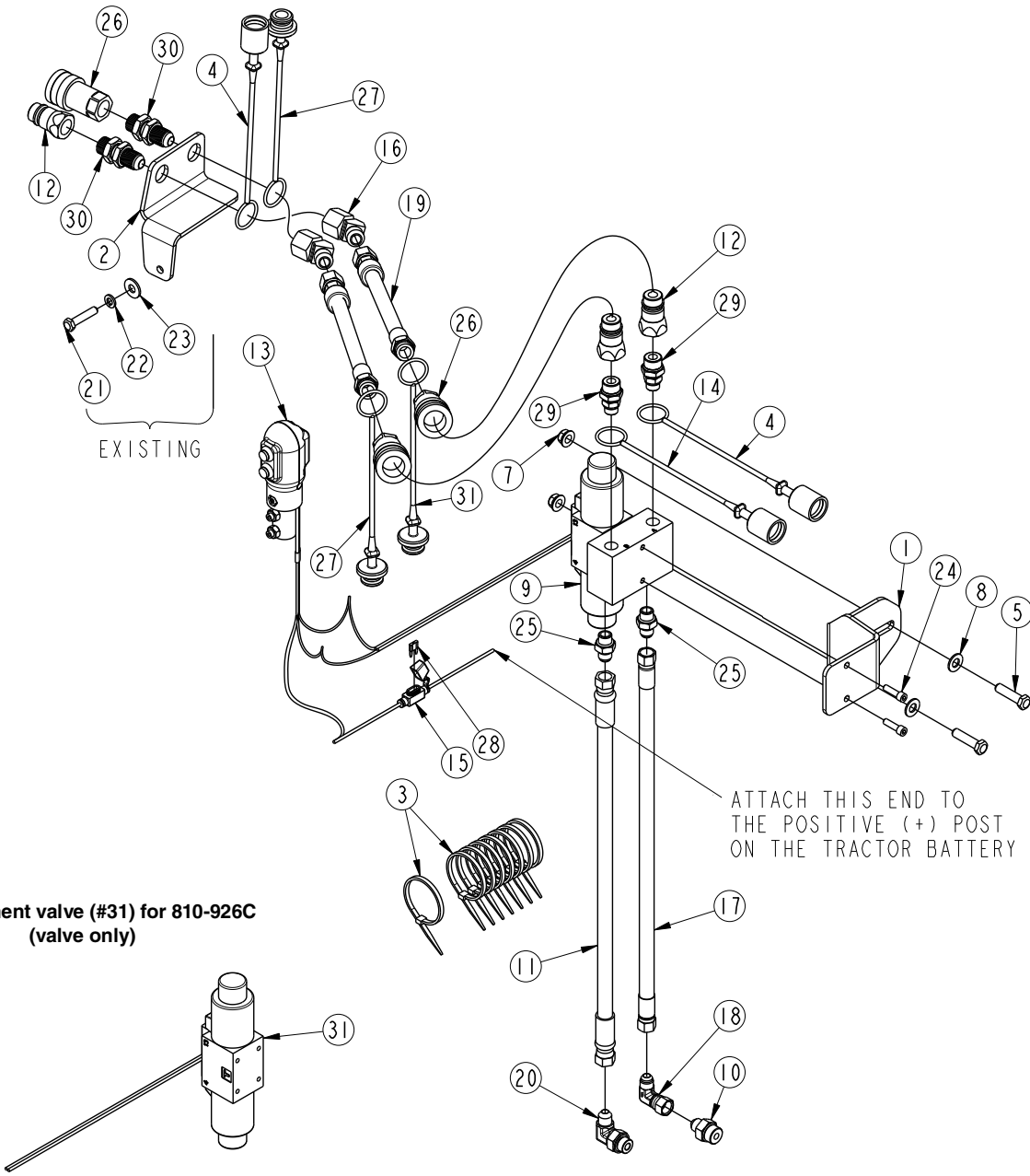
Be sure to lower the attachment to the ground and to relieve all hydraulic pressure to the attachment before leaving the tractor seat. Relieve hydraulic pressure to the attachment as follows:

1. Turn tractor switch key to off.
2. Press and hold both red buttons down on the control handle until all movement at the attachment stops.

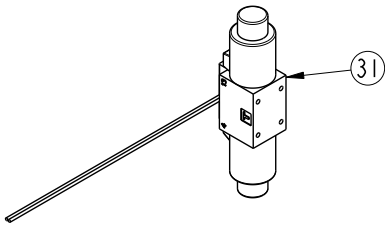


This page left blank intentionally.

73075



Replacement valve (#31) for 810-926C (valve only)



Hydraulic Hose Identification Chart

<p>851-376C - (#19)</p>	<p>86.00</p>
<p>811-253C - (#11)</p>	<p>62.00</p>
<p>841-563C - (#17)</p>	<p>48.00</p>

73073

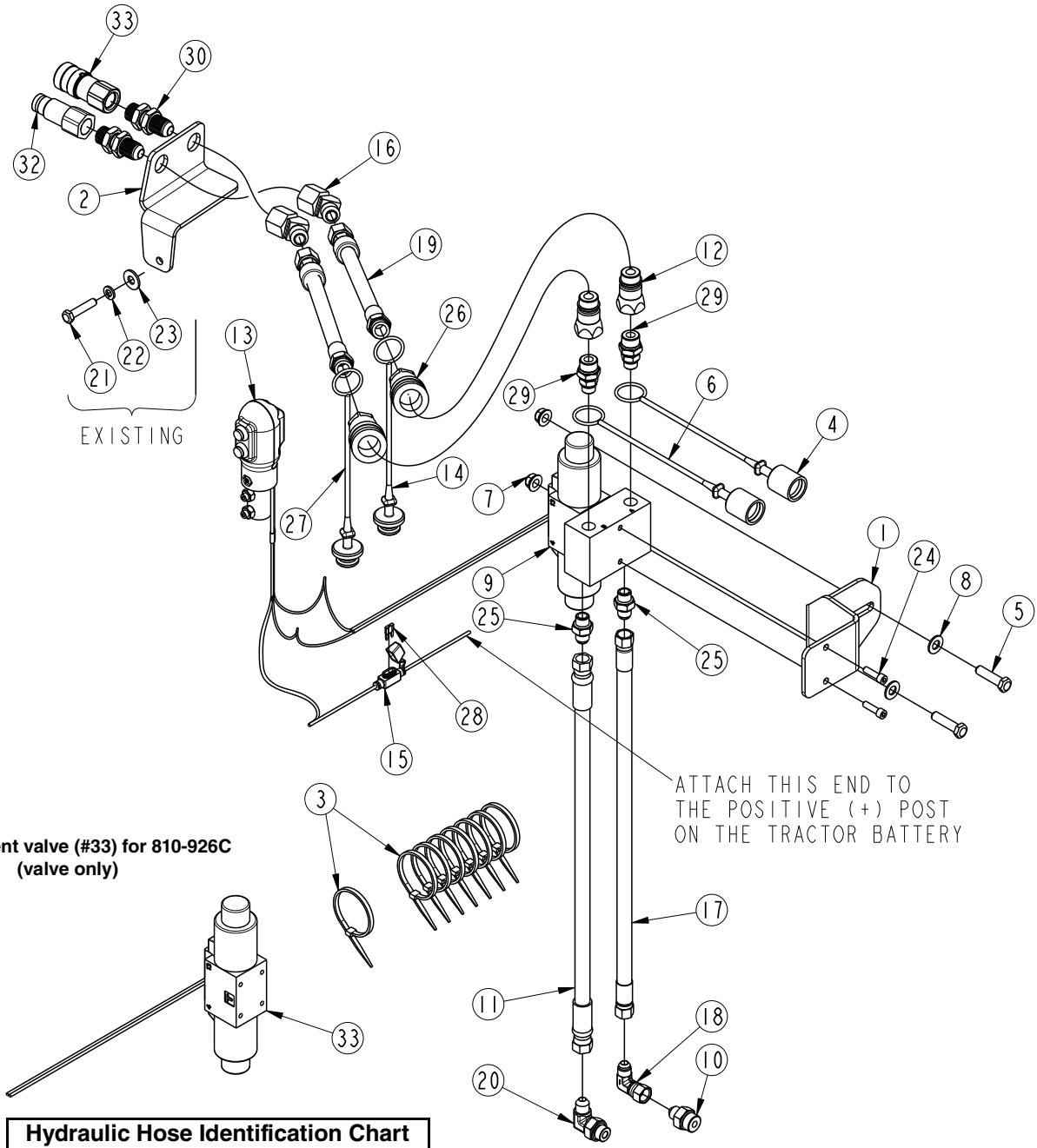
**Third Function Valve Kit for Cab Tractor
Figure 11**



Kit No. 380-168A B3350 & B2650THIRD FUNCTION VALVE KIT
(Equipped with pioneer couplers)

Item	Part No.	Description	Qty
1	380-256D	BRKT, VALVE MOUNT	1
2	380-257D	PLATE, BLKHD MOUNT	1
3	800-112C	CABLE TIE .19X7.25 1.75D 50LB	8
4	861-539C	BLACK DUST CAP, 1/2" QD AG.	2
5	802-022C	HHCS 3/8-16X1 1/2 GR5	2
6	861-540C	GREEN DUST CAP, 1/2" QD AG	1
7	803-209C	NUT FLANGE LOCK 3/8-16 PLT	2
8	804-012C	WASHER FLAT 3/8 SAE PLT	2
9	810-926C	VALVE, THIRD FUNCTION	1
10	811-133C	AD 9/16MJIC 3/4MORB	1
11	811-253C	HH3/8R2 062 9/16FJIC	1
12	811-394C	CP 3/4FORB MALE QD POPPET TYPE	3
13	380-165S	ASY, PUSH BUTTON CNTRL HNDL	1
14	861-541C	BLACK DUST PLUG, 1/2" QD AG	1
15	833-650C	BLADE FUSE HOLDER, MINI	1
16	811-040C	EL 45 3/4MJIC 3/4FJIC	2
17	841-563C	HH3/8R2 048 9/16FJI	1
18	811-169C	EL 9/16MJIC 9/16FJIC	1
19	851-376C	HH3/8R2 086 3/4FJIC 3/4MORB	2
20	851-768C	EL 3/8MBSPP 9/16MJIC	1
21	N/A	EXISTING LOADER HARDWARE	0
22	N/A	EXISTING LOADER HARDWARE	0
23	N/A	EXISTING LOADER HARDWARE	0
24	802-418C	HSHCS 1/4-20X7/8	2
25	811-170C	AD 9/16MORB 9/16MJIC	2
26	811-870C	CP 3/4FORB QD FEMALE (POPPET)	3
27	861-542C	GREEN DUST PLUG, 1/2" QD AG.	2
28	833-495C	FUSE, 10 AMP MINI BLADE	1
29	851-084C	AD 9/16MORB 3/4MORB	2
30	851-344C	AD 3/4MJIC 3/4MORB BLKHD W/ LN	2
31	850-472C	HYDRO-TEK VALVE REPLACEMENT (includes valve without manifold)	1

73079



Hydraulic Hose Identification Chart

<p>851-376C - (#19)</p>	<p>86.00</p>
<p>811-253C - (#11)</p>	<p>62.00</p>
<p>841-563C - (#17)</p>	<p>48.00</p>

73073

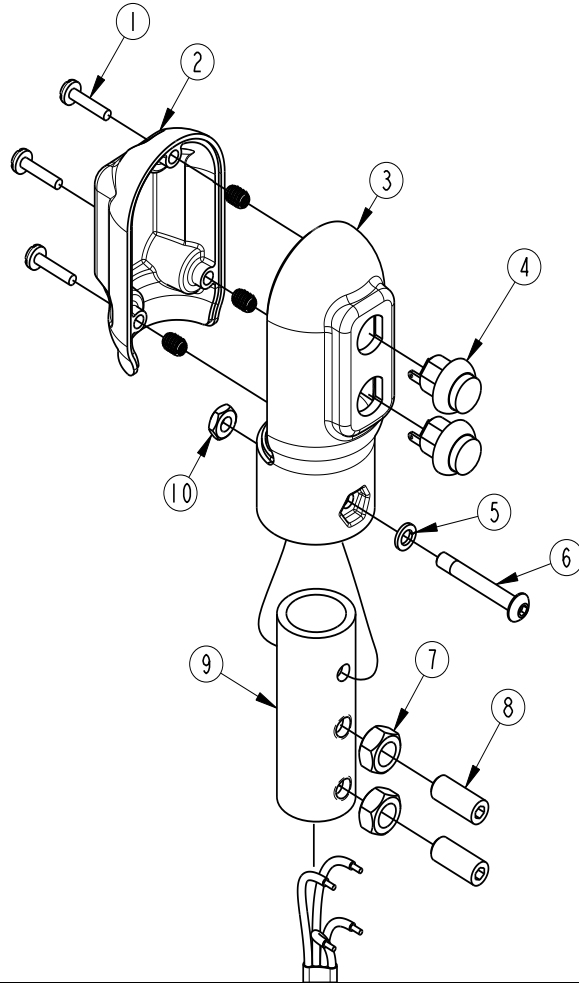
Third Function Valve Kit for Cab Tractor
Figure 12



Kit No. 380-335A B3350 & B2650THIRD FUNCTION VALVE KIT
(Equipped with flat face couplers)

Item	Part No.	Description	Qty
1	380-256D	BRKT, VALVE MOUNT	1
2	380-257D	PLATE, BLKHD MOUNT	1
3	800-112C	CABLE TIE .19X7.25 1.75D 50LB	8
4	861-539C	BLACK DUST CAP, 1/2" QD AG	2
5	802-022C	HHCS 3/8-16X1 1/2 GR5	2
6	861-540C	GREEN DUST CAP, 1/2" QD AG	1
7	803-209C	NUT FLANGE LOCK 3/8-16 PLT	2
8	804-012C	WASHER FLAT 3/8 SAE PLT	2
9	810-926C	VALVE, THIRD FUNCTION.	1
10	811-133C	AD 9/16MJIC 3/4MORB	1
11	811-253C	HH3/8R2 062 9/16FJIC	1
12	811-394C	CP 3/4FORB MALE QD POPPET TYPE	3
13	380-165S	ASY, PUSH BUTTON CNTRL HNDL.	1
14	861-541C	BLACK DUST PLUG, 1/2" QD AG	1
15	833-650C	BLADE FUSE HOLDER, MINI	1
16	811-040C	EL 45 3/4MJIC 3/4FJIC	2
17	841-563C	HH3/8R2 048 9/16FJI	1
18	811-169C	EL 9/16MJIC 9/16FJIC	1
19	851-376C	HH3/8R2 086 3/4FJIC 3/4MORB.	2
20	851-768C	EL 3/8MBSPP 9/16MJIC.	1
21	N/A	EXISTING LOADER HARDWARE	0
22	N/A	EXISTING LOADER HARDWARE	0
23	N/A	EXISTING LOADER HARDWARE	0
24	802-418C	HSHCS 1/4-20X7/8.	2
25	811-170C	AD 9/16MORB 9/16MJIC	2
26	811-870C	CP 3/4FORB QD FEMALE (POPPET)	3
27	861-542C	GREEN DUST PLUG, 1/2" QD AG	2
28	833-495C	FUSE, 10 AMP MINI BLADE.	1
29	851-084C	AD 9/16MORB 3/4MORB	2
30	851-344C	AD 3/4MJIC 3/4MORB BLKHD W/ LN	2
31	841-099C	CP 3/4FORB QD FLATFACE	1
32	861-543C	CP 3/4FORB QD FML FLATFACE	1
33	850-472C	HYDRO-TEK VALVE REPLACEMENT (includes valve without manifold)	1

73015



Control Handle
Figure 13

380-165S Push Button Control Handle

Item	Part No.	Description	Qty
1	801-091C	CRPHMS 6-32X5/8 SS	3
2	837-053C	COVER, PUSH BUTTON CNTRL HNDL	1
3	837-054C	BASE, PUSH BUTTON CNTRL HNDL	1
4	833-739C	SWITCH, P9 PB NO SPST MOM RED	2
5	804-054C	WASHER LOCK #10	1
6	801-250C	HSBHCS #10-32X1 3/8	1
7	803-008C	NUT HEX 5/16-18 PLT	2
8	801-204C	SCREW SET SCKT HD 5/16-18X3/4	2
9	380-225D	MOUNT TUBE, CONTROL STICK	1
10	803-269C	NUT HEX 10-32 PLT	1

This page left blank intentionally.



Corporate Office: P.O. Box 5060
Salina, Kansas 67402-5060 USA
www.landpride.com
