



# Dealer Training

---

BX 80 SERIES 3<sup>RD</sup> FUNCTION VALVE  
INSTALLATION MANUAL PART# 380-289A

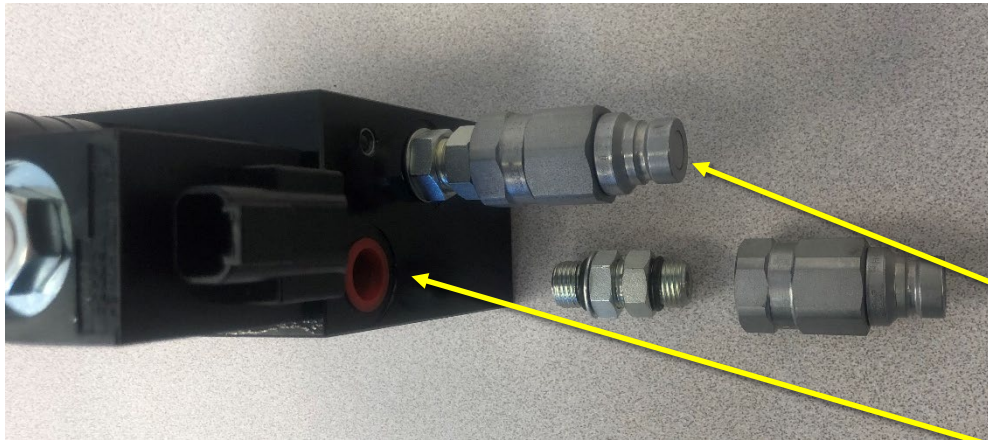


Photo 1-1

**Assemble 3<sup>rd</sup> function valve:**  
Install fittings in Port A & B.  
First install two 811-636C  
(AD 9/16 Strait Union). Then  
two of 861-288C  
(CP 9/16FORB QD ¼ Body Male).

Port A

Port B

On the other side of valve  
locate port P & T. Install  
PN# 811-170C on each port.

Port P

Port T

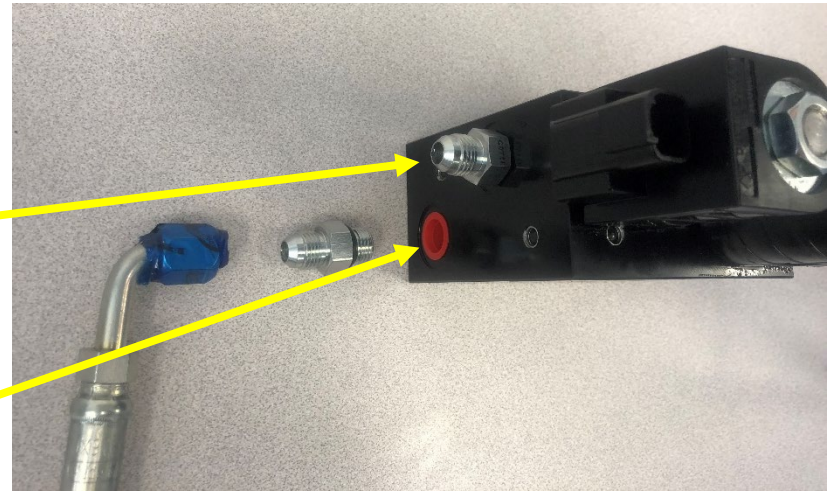


Photo 1-2

Mount the valve bracket on the LEFT side of the tractor, under the floor pan. Use 802-159C (5/16-18x1) and 802-115C (5/16-18x2) with 803-043C (whiz nut 5/16-18) to attach to the tractor.

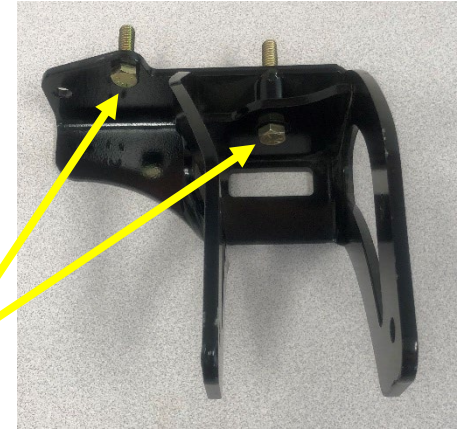


Photo 1-3

Mounting holes used

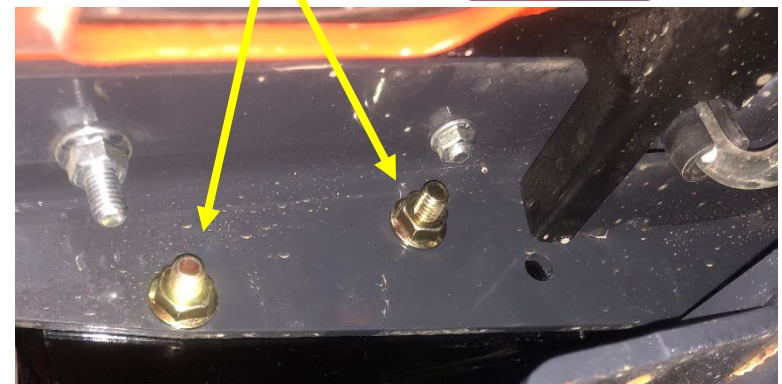


Photo 1-5



Photo 1-4





Photo 1-6

Remove the existing handle and install the 380-302S Push Button Control Handle. Use Caution not to pinch wires with set screws.

Route wire down through the rubber boot.

Route the wire and the 2 851-959C (58 inch hose) under the tractor. Make sure the 90 degree bend on the hoses are on the left side of the tractor or valve side. Avoid the fan and driveshaft under the tractor. Zip tie where needed.

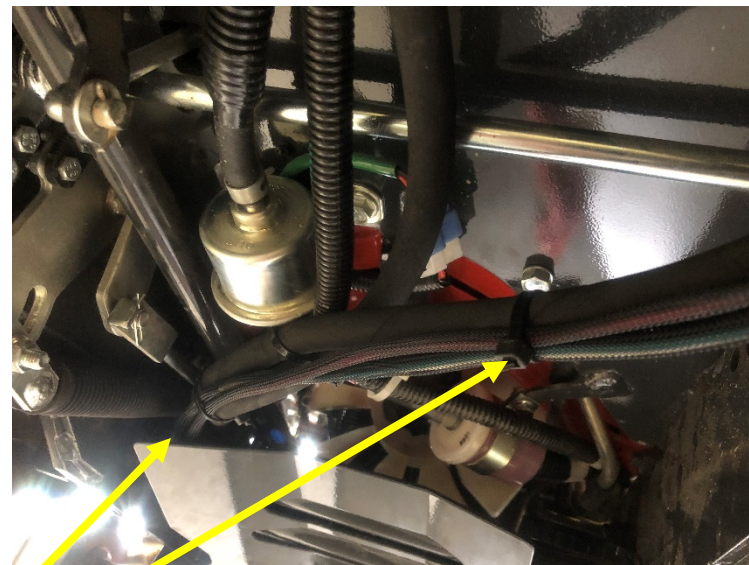


Photo 1-7

Route wires out the left side of tractor and attach the **Black** eyelet to the negative post of the battery and the **Red** eyelet to the positive post of battery.



Photo1-8



Photo 1-9

Plug the two connectors to the valve. One on top and one on bottom.

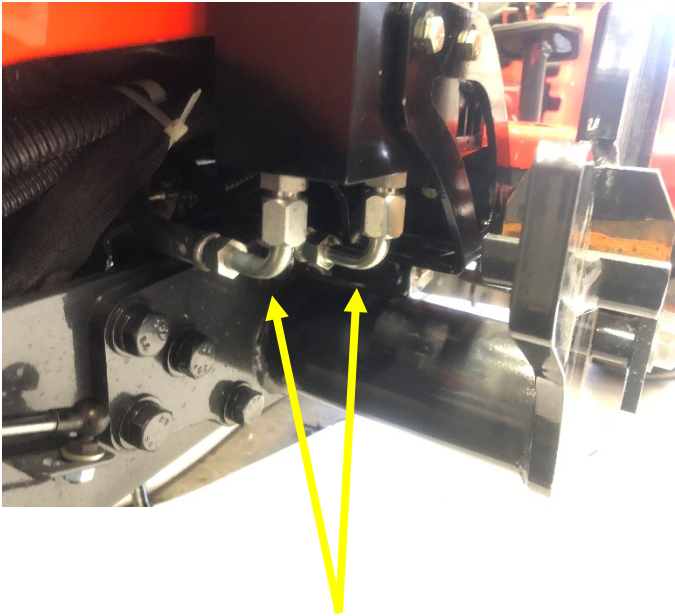


Photo 1-10

Attach valve to mounting bracket with 802-274C (1/4-20x3) and 803-088C (lock nut 1/4-20)



Photo 1-11



Attach the two 851-959C to Port P and T at the bottom of the valve.

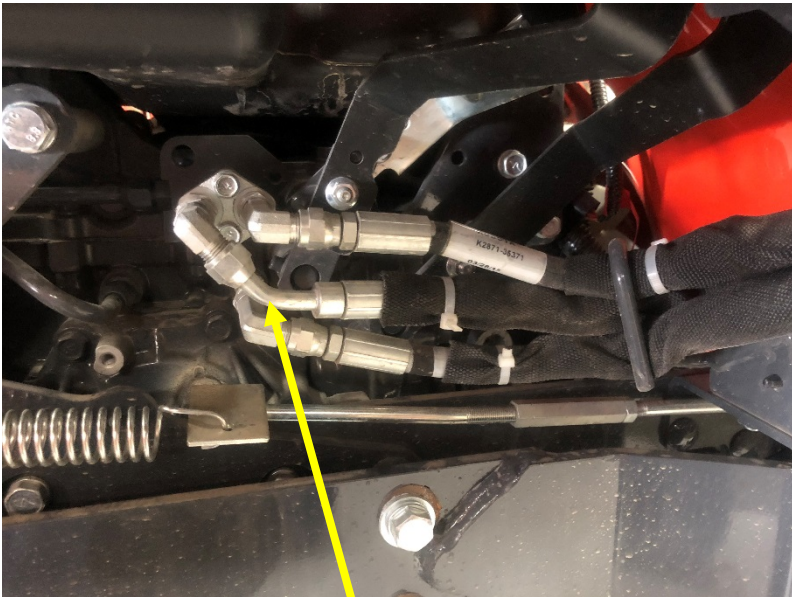
Chock front wheels and jack the tractor up. Use jack stands to support tractor. Remove the right rear tire to access the Power Beyond.



Photo 1-12



Photo 1-13



Remove hose

At the power beyond block (behind tire), remove line on back side. Attach 811-397C (45 Degree fitting) to the 90 degree elbow. Then attach 851-959C hose from the P Port.

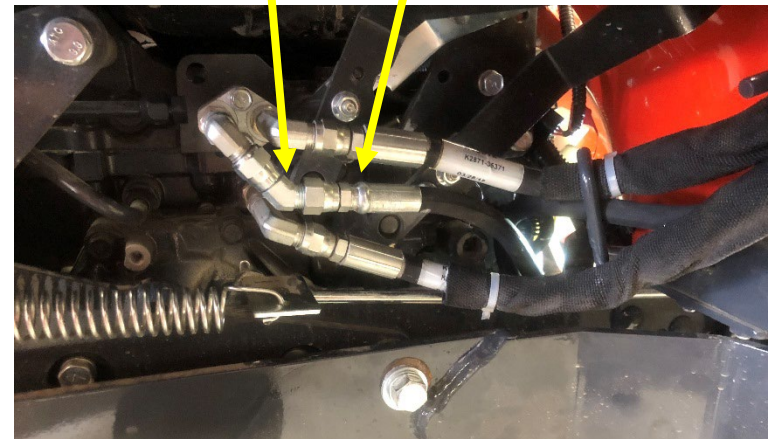


Photo 1-14



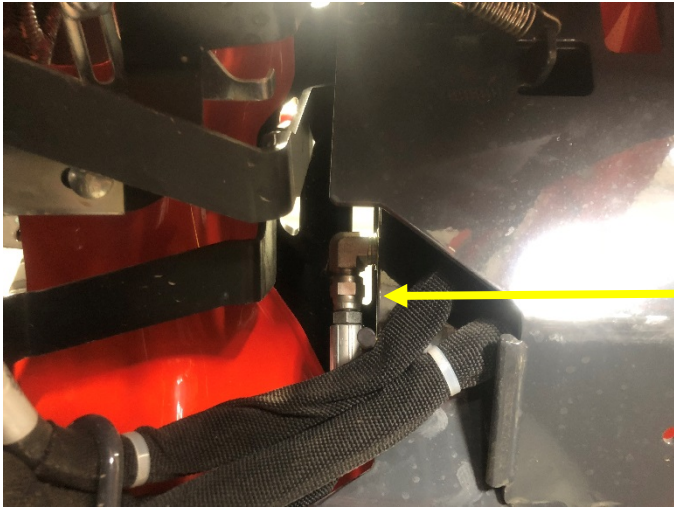


Photo 1-15

Follow the fitting removed in previous step (Photo 1-13) and remove rest of hose. Take the hose from T port of valve and attach where hose was removed.



Photo 1-16

Assemble the bulk head mount by attaching the 851-276C to the plate. Then attach the 841-467C to it. Use the 806-256C U-Bolt to attach to the loader cross tube on the right side of tractor.

Attach hoses 381-170L to 851-276C. Then route through the D-Bracket on the left hand side of tractor.



Front of tractor ↓

Photo 1-17

Route hoses above the cylinder pin and up the arm to the third function valve flat face couplers. Securing with zip ties where needed.



D-Bracket

Photo 1-18



Photo 1-19



Install fabric hose sleeving on to both hoses. Zip tie the ends.

Attach 861-289C (Female flat face coupler) to the end of hoses and attach to valve.

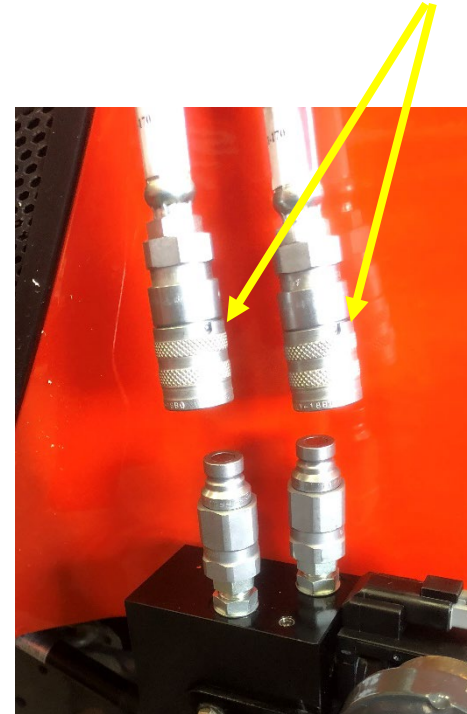


Photo 1-20

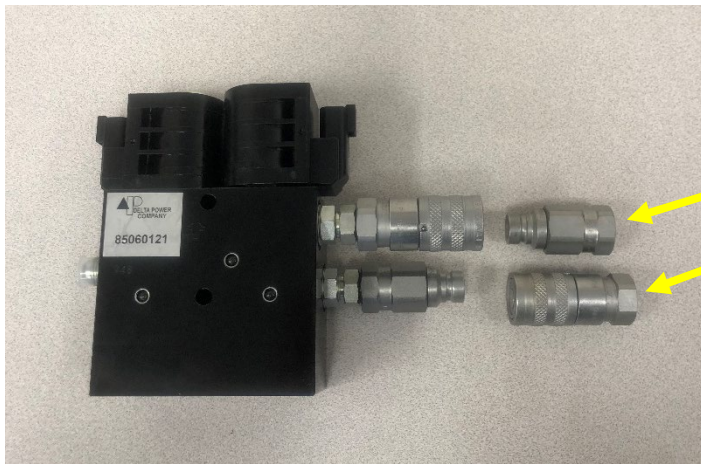


Photo 1-21

As an *Alternative* hook-up. You can put one male and one female flat face coupler on the valve. This will help insure you get connected to the same port every time. So your buttons are always the same functions.

## Check the following:

Start tractor and check for leaks.

Check tractor hydraulic levels, add as needed.

Check to make sure 3<sup>rd</sup> function valve is energized.

If not engaging check the fuse , if it is blown check the wires in Photo 1-6 to make sure the set screws are not pinching the wires.





