

TE Series

Features

TE6576CD – TE8511C



High Performance - Low Input

The TE6576CD and TE8511C offer working widths of 24'11" and 36'1" respectively. With a pull type drawbar, they are easy to attach to your tractor. They are still ideal for low horsepower tractors due to their trailed design, which minimizes compaction and operating cost.

TE8511C Pictured



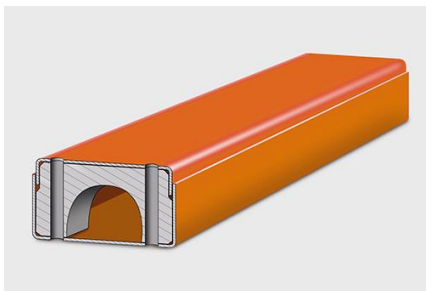
Gearbox

Each Kubota tedder model is fitted with a maintenance-free oil-immersed gearbox, for extreme durability and stability. The ball bearings are life span lubricated. This absolutely maintenance-free housing guarantees maximum durability.



Super-C Tine

The symmetric Kubota Super-C tines efficiently pick up the crop and turn it, allowing for a very efficient crop flow. The crop is spread evenly and thrown over a wide distance, which ensures that the wet crop is placed on top of dry crop. These tines are made of 0.39" shot-peened spring steel. Our spring coil diameter has a 20% larger diameter than conventional designs. This increases each tine service life, even when tedding large quantities of crop.



Strong Chasis Design

All Kubota tedders are built around a rugged, CNC bend, box chassis made out of one piece of metal with only one welding seam - for maximum rigidity. The chassis design is fully enclosed at the top edge for maximum strength.



Unique Transport Solution

Switching working to transport is fast and easy. The TE6576CD's transport wheels fold hydraulically toward the center of the machine, providing for a low center of gravity and improved balance. When time to transport the TE8511C to the next field, the outer rotors are folded forward onto a carrier frame. The carrier frame allows the tedder to move forward quickly and easily from one field to another. Both models have a transport width of 9'9".