



Dealer Training

B2650 AND B3350

3RD FUNCTION VALVE INSTALLATION MANUAL

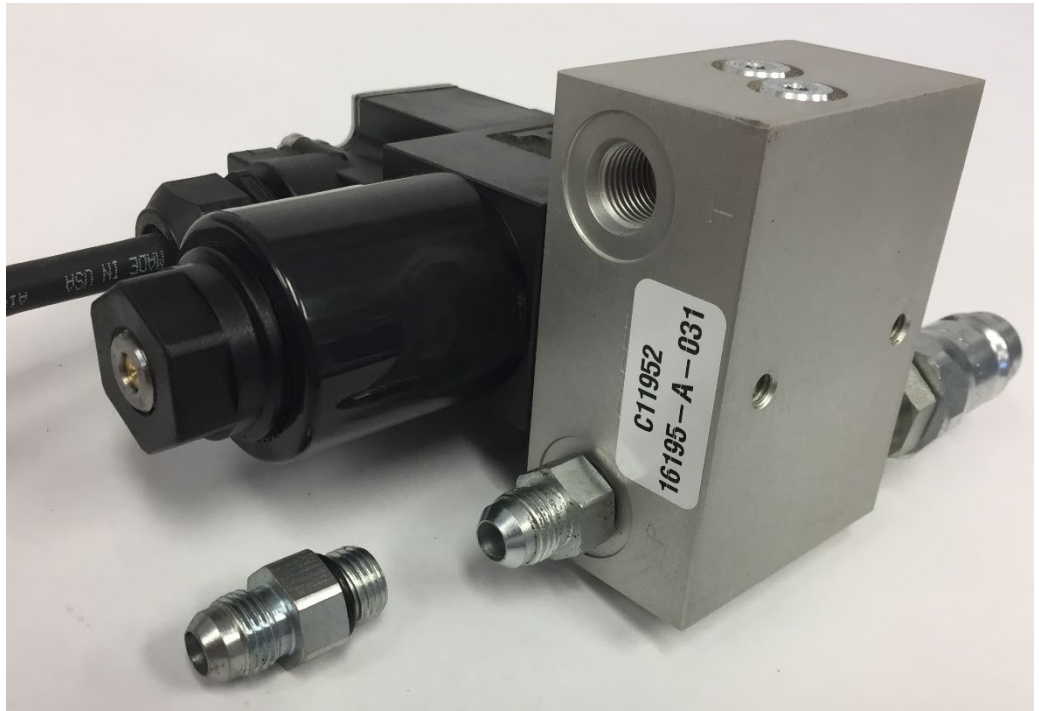
USE PART# 380-168A

On the other side of valve locate Port A & B. Install PN# 851-084C MORB in each port. then Install Male Tips to this fitting.



Assemble Valve.

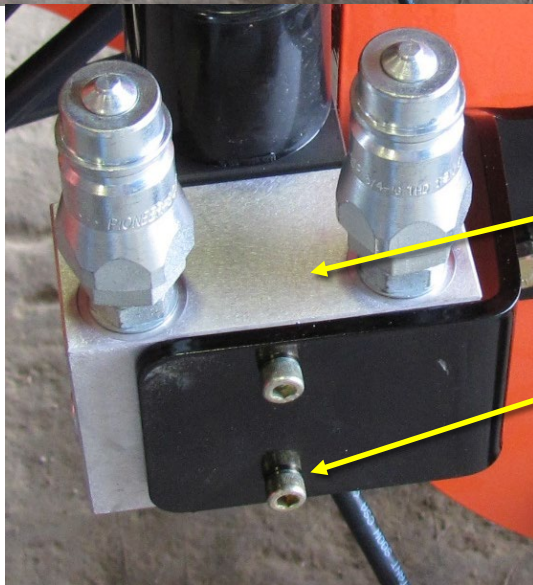
Locate port P & T and install one PN# 811-170C on each port.





Install Valve Mount Bracket:

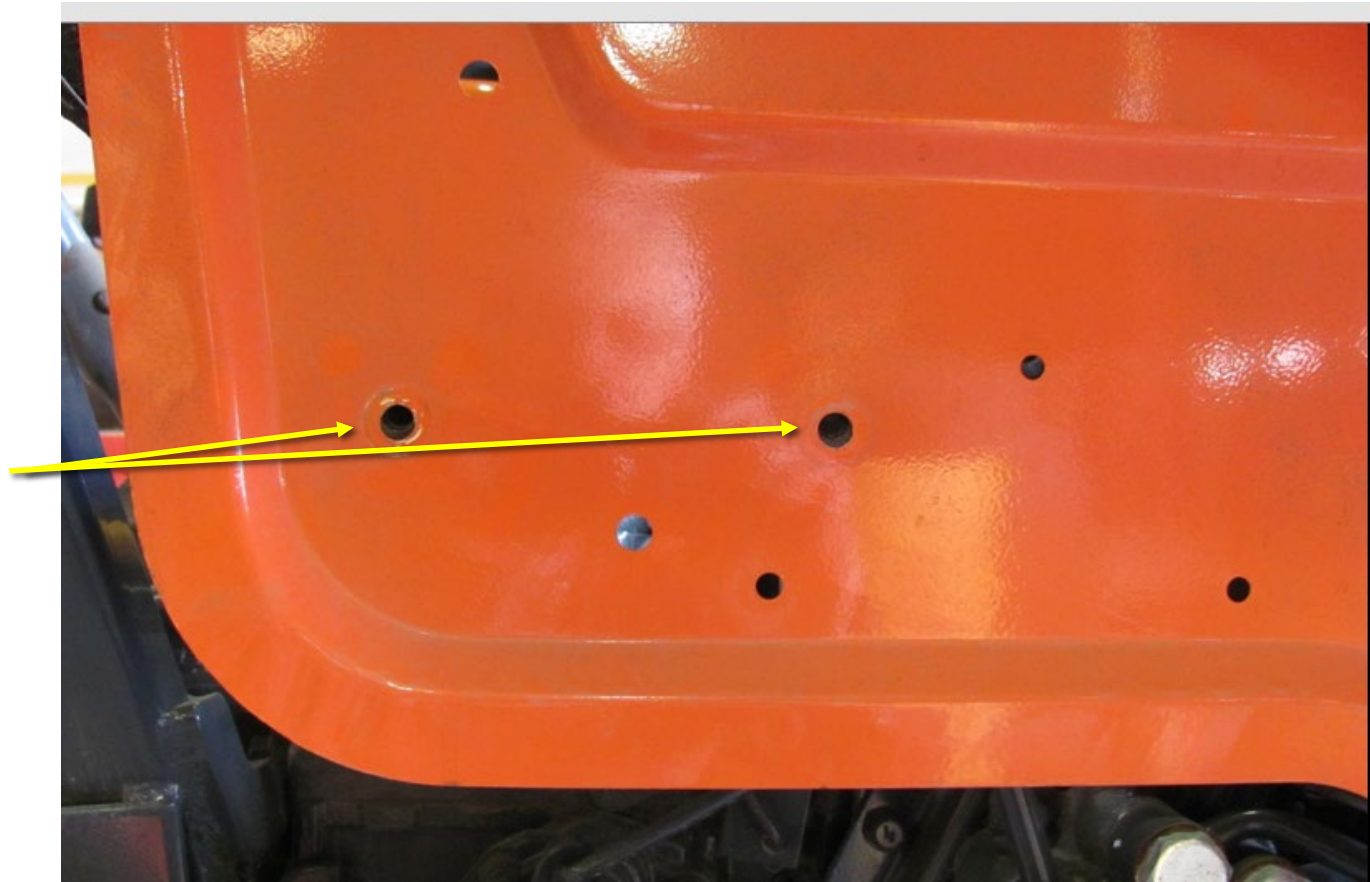
Position valve, male tips up then attach PN# 380-256D (Valve Mount Bracket) to loader support frame with 2 HHCS 3/8-16X1 1/2 GR5 bolts and flat washers. Tighten to 31 ft.-lbs.



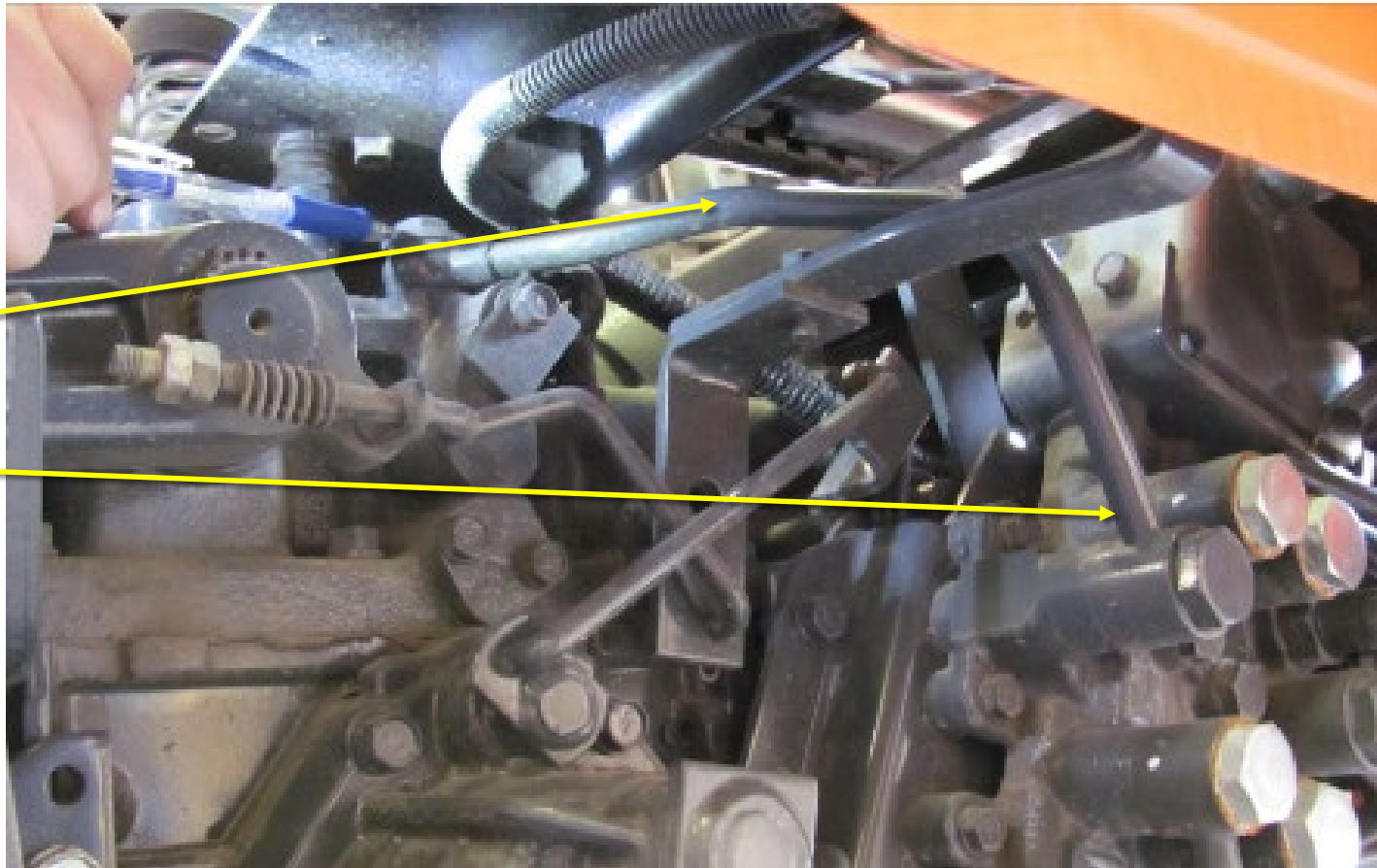
Install Valve Body (810-926C) to Valve Mount Bracket with 2 HSHCS 1/4-20X7/8

Chock tires and jack up the **RH** rear of tractor, place a jack stand under axle and remove tire.

Remove the seat and bolts from the seat support bracket (both sides). Then remove these for access to the top of the return tank fitting.

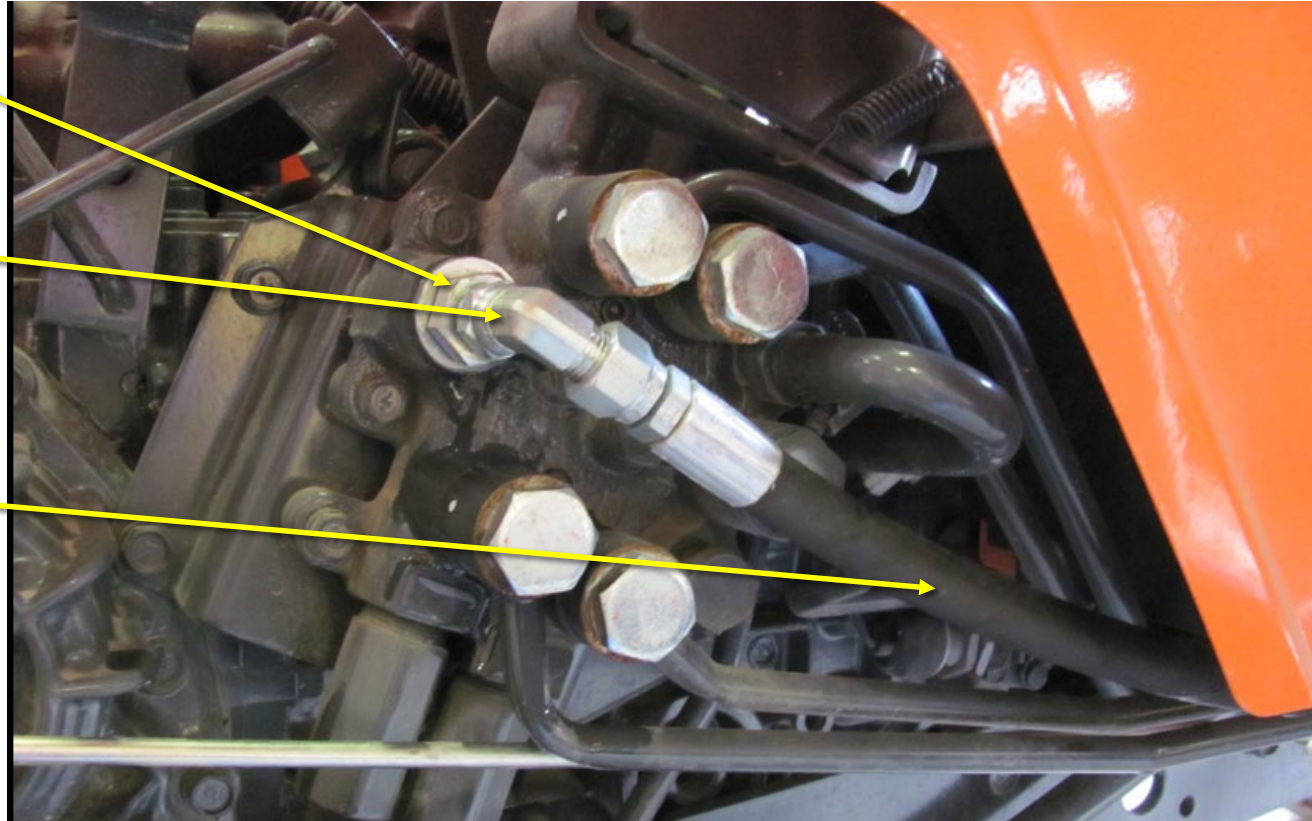


Locate the steel tube
from the Power
Beyond and remove
line.



Install adapter (811-133C) 9/16MJIC ¾ MORB and elbow (811-169C) EL 9/16MJIC 9/16 FJIC

Install **48"** Hose (841-563C) from the Power Beyond and routed under the tractor to the "P" port. Secure hose with cable ties.

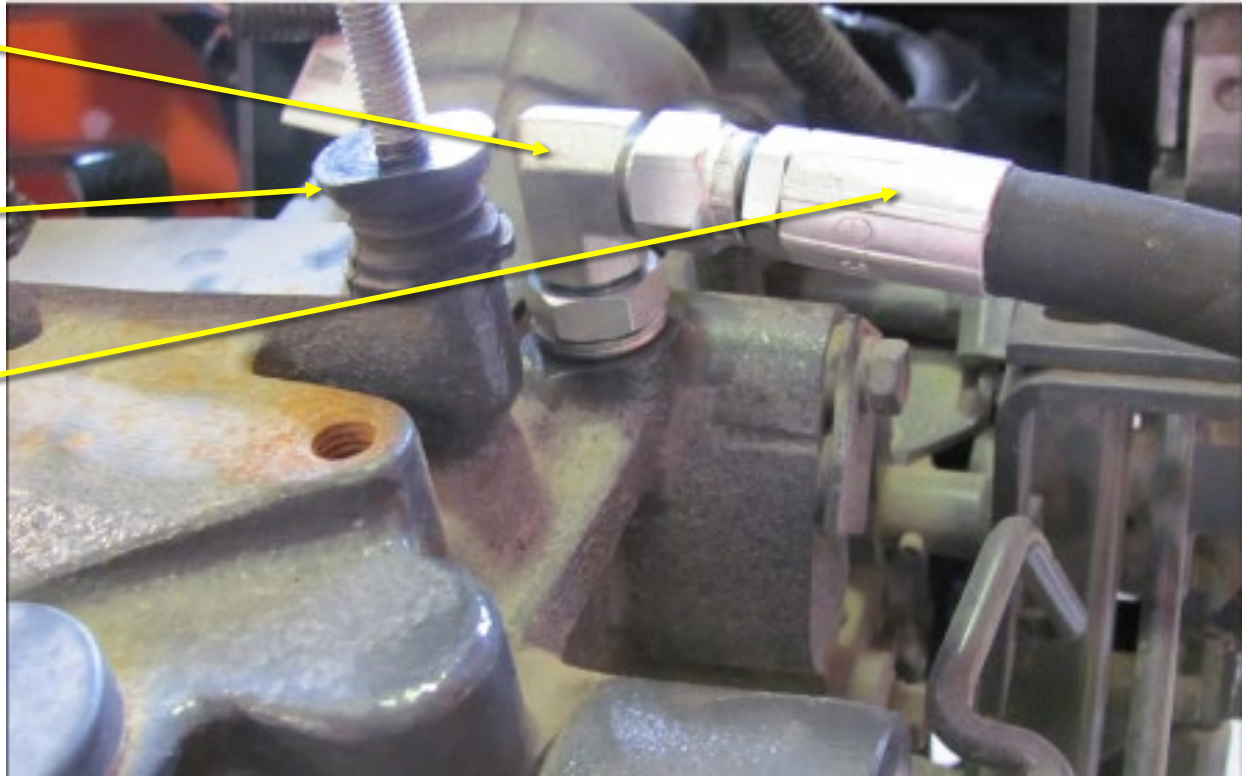


Install with Elbow (851-768C)
EL 3/8MBSPP 9/16MJIC.

May require the removal of
the Seat Support Stud.

Attach the **62"** hose
(811-253C) from the **"T"** port
of valve to this location.
Secure hoses with cable ties.

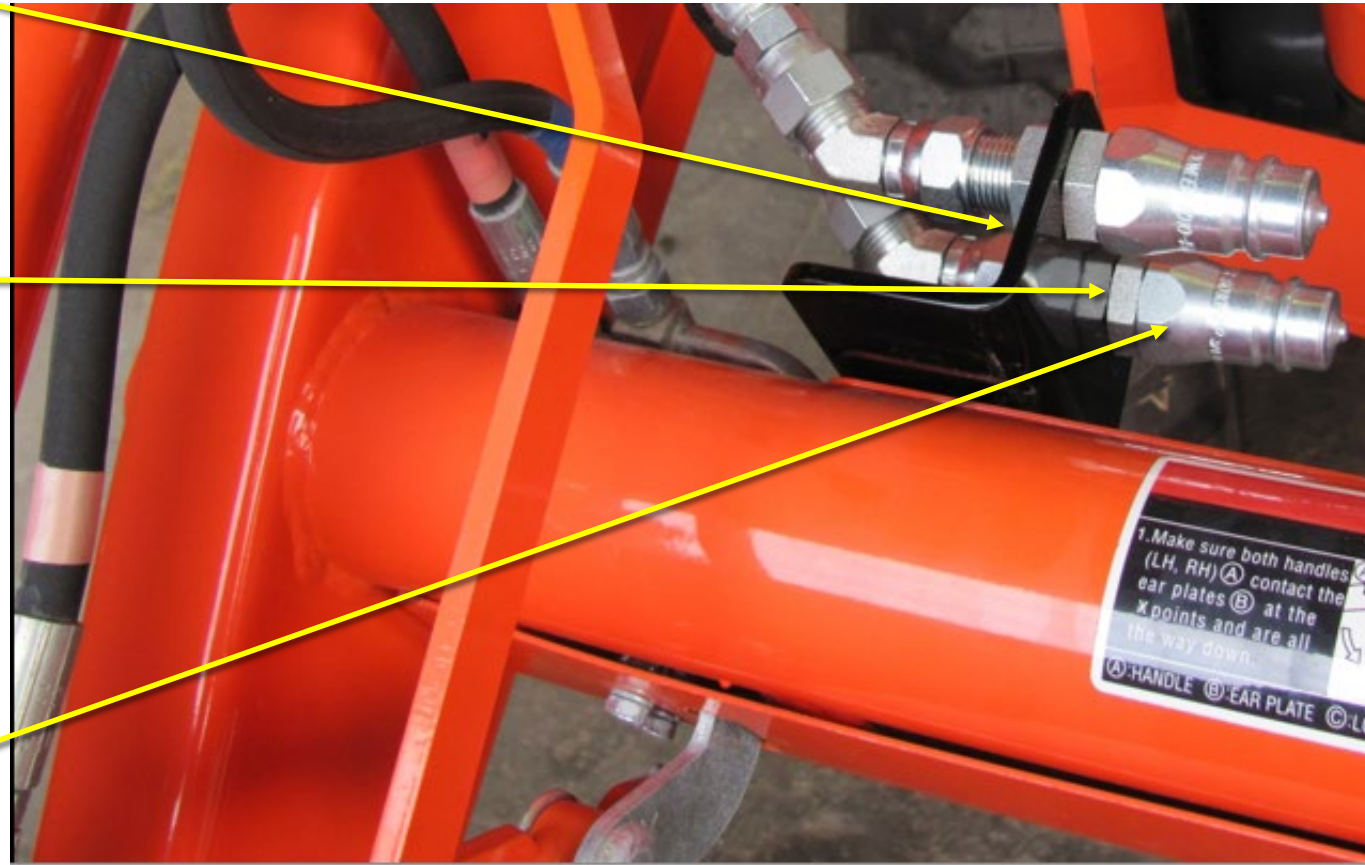
Re-attach seat support stud
then install the seat support
and the seat.



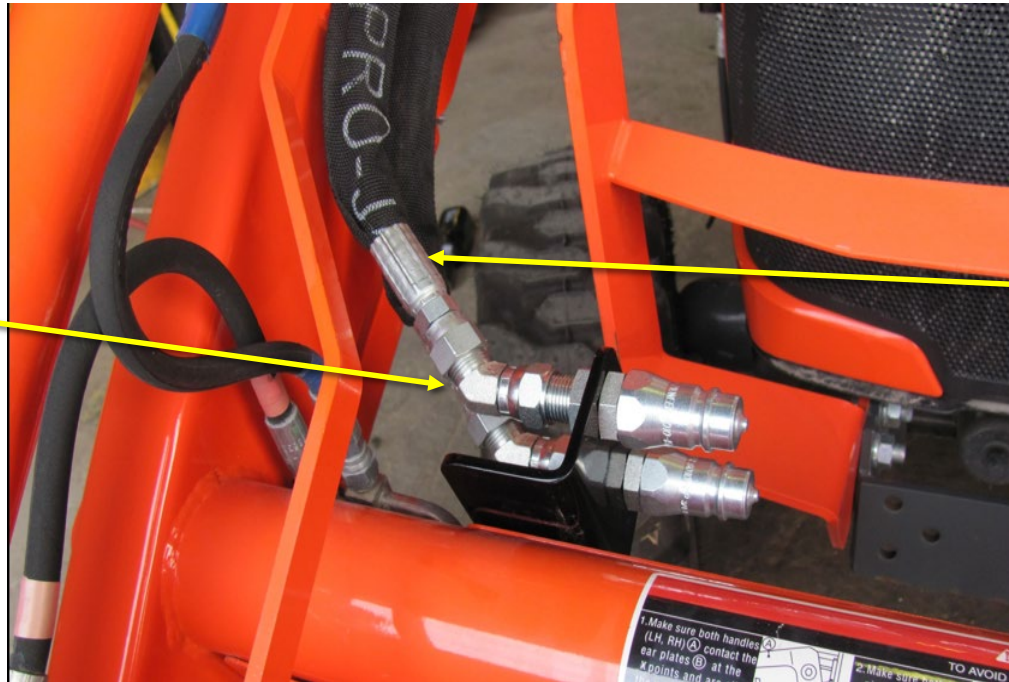
Install Bulkhead bracket (380-257D) to torque tube of loader with removed hardware.

Install 2 of 851-344C (bulkhead fitting) one in each hole of bracket, as shown. Jam nuts are used to hold them secure to the bracket.

Attach 2 male tips (811-394C) to front side.



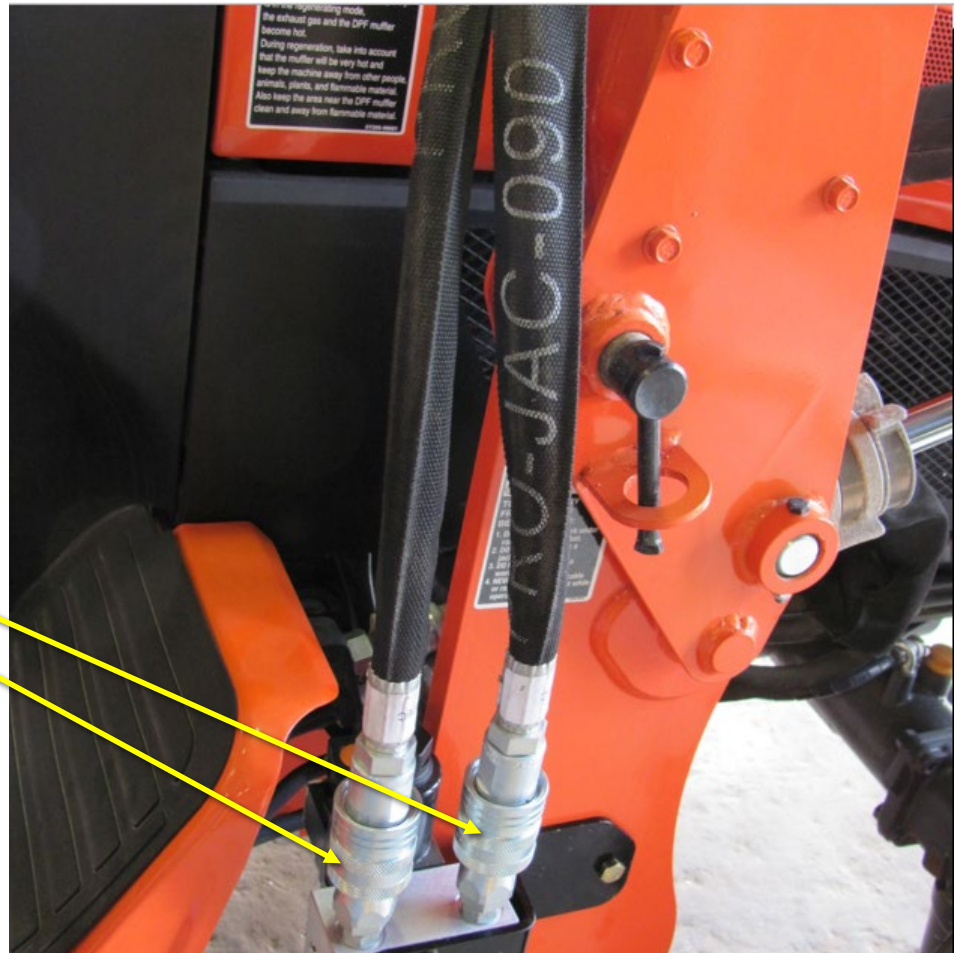
Attach 2 (811-040C)
45 deg. Elbows to
the bulkhead
adapters.



Attach 2 (851-376C)
86" shielded hoses
to JIC side. Run
other end of hoses
to valve.

Route hoses along loader arm and **through loader loop bracket**. Secure where needed with cable ties.

Install 2 female tips (811-870C) on hoses and connect to valve.

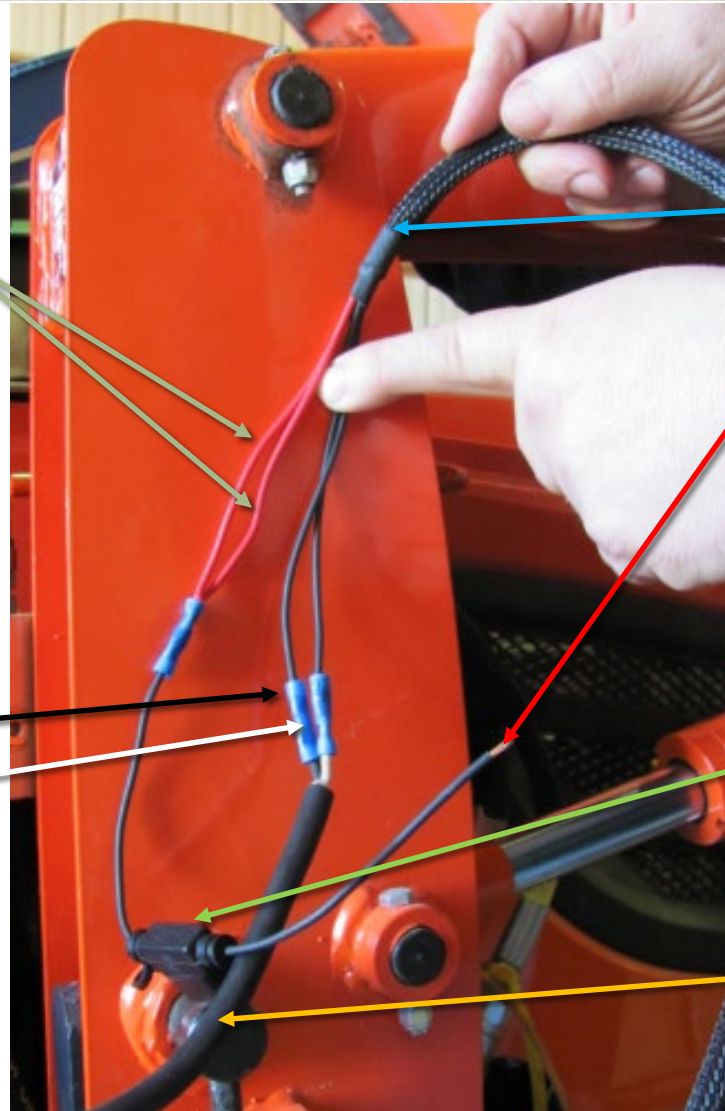


Remove loader knob (pulls off) assemble handle as pictured.
Attach handle to stem, make sure wire harness clears set screws.
Run wiring down stem (zip tie) to valve wiring harness.



The two **Red (+)** wires from the Control Handle will attach to Fuse Holder. Install supplied 10 AMP fuse, attach to Positive (+) battery post.

The two **Black** wires from Control Handle will need attached to pig tail from the Valve. Connect one **Black to Black** and one **Black to White**. (Butt connectors are not supplied). Secure all wiring with cable ties.



Wire Harness from Control handle

To Positive Battery Post

Fuse Holder

Wire Harness to Valve



Check the following:

Start tractor and check for leaks.

Check tractor hydraulic levels, add as needed.

Check to make sure 3rd function valve energizes and the indicator light on the front correspond to the button being pushed.

If not engaging check the fuse , if it is blown check the wires to make sure the set screws are not pinching the wires.

