

About Us

Our goal is to create affordable and innovative solutions for our customers' everyday problems. We're always looking for new ways to make your life easier.

Field Ready

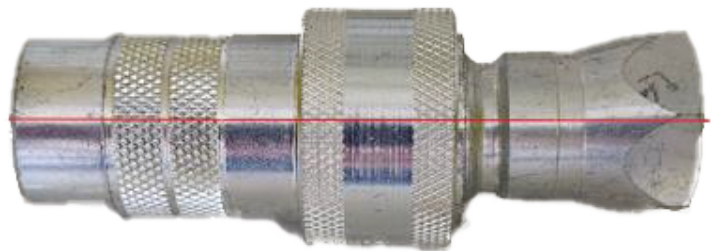
Hydraulic Coupler Connect Tool

Thank you!

Thank you for purchasing a Field Ready hydraulic coupler connect tool! You should find it helpful when connecting quick couplers that do not readily lock due to a line with static pressure. This easy-to-operate trigger clamp rated at 375 lbs. will fit both 1/2" and 3/4" thread couplers.

Note

When using this tool, be sure to maintain alignment of both coupler halves to avoid binding that may cause damage to the couplers and/or prevent final lock-up.



Warning: Attempting to force alignment using this tool alone will also lead to premature failure of the clamp. Pioneer style couplers, as shown above, require that the collars be held back as well.



Warranty

While in use for its designated purpose, this tool is warranted against failure resulting from faulty materials or workmanship for a period of one year from the date of purchase. Resolution will be by either repair or replacement. Warranty and Product Inquiries should be directed to the seller of this Field Ready product. Additional information is also available at www.messicks.com

Note: Should you choose to use this clamp in its original form, the rubber pads (included) should be installed after having removed the zinc-plated jaws.



800-2220-3373



1475 Strickler Rd.
Mount Joy, PA 17552

Field Ready

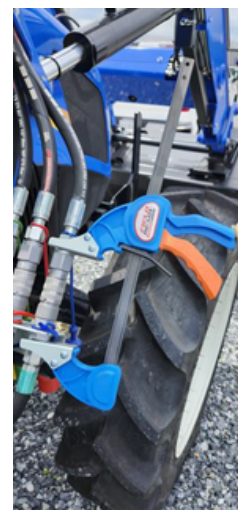
Possible Applications



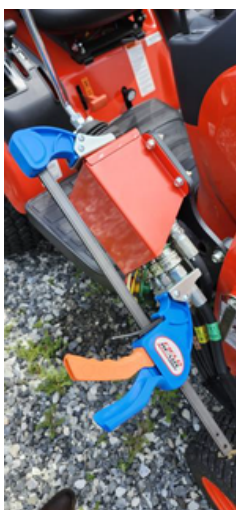
Kubota Front Loader



Kubota Backhoe



New Holland



Kioti



John Deere



Krone